

COLLECTORS PLUS



James Brown • Mariano Ching • Louie Cordero • Chati Coronel • Melvin Culaba
Kawayan De Guia • Patricia Perez Eustaquio • Dina Gadia • Nona Garcia • Dennis Gonzales
Marie Harnett • Geraldine Javier • Maria Justus • Lou Lim • Pow Martinez
Wawi Navarroza • Yvonne Quisumbing • Bernardo Pacquing • Arturo Sanchez Jr
Julião Sarmento • Yasmin Sison • Maria Taniguchi • Rosemarie Trockel

SILVERLENS

COLLECTORS PLUS

17 September to 10 October 2020

**James Brown · Mariano Ching · Louie Cordero · Chati Coronel · Melvin Culaba
Kawayan De Guia · Patricia Perez Eustaquio · Dina Gadia · Nona Garcia · Dennis Gonzales
Marie Harnett · Geraldine Javier · Maria Justus · Lou Lim · Pow Martinez
Wawi Navarroza · Yvonne Quisumbing · Bernardo Pacquing · Arturo Sanchez Jr
Julião Sarmento · Yasmin Sison · Maria Taniguchi · Rosemarie Trockel**

SILVERLENS presents a selection of art from prominent collectors living in Manila and Singapore. The show includes early works by **Geraldine Javier**, **Yasmin Sison**, and **Maria Taniguchi**. There are large pieces by **Nona Garcia**, **Dennis Gonzales**, and **Art Sanchez**; as well as a couple of collaborative works by **Louie Cordero**, one with **Kawayan de Guia** and the other with **Mariano Ching**. Accompanying the show are iconic pieces by Silverlens artists **Dina Gadia**, **Pow Martinez**, **Patricia Perez Eustaquio**, **Chati Coronel**, and **Bernardo Pacquing**. A European collection of works on paper adds variety to the mix, including works by **Rosemarie Trockel** and **Julião Sarmento**. Decades of collecting would not be able to bring all these pieces together, and we are thrilled to be able to present them at Silverlens.

The show's earliest work, *Start 'Em Young*, was completed at the start of the millennium, in 2001 by **Geraldine Javier**. The notes accompanying this painting read "the Philippines is a country obsessed with religion, basketball, and beauty pageants. Geraldine Javier is obsessed with obsession." Two decades on, **Javier** is one of the most important contemporary artists from the region, with a practice that has grown to include working with a community of women. A rare pure painting by the artist, as her work has moved on to mixed media pieces, we are thrilled to give new collectors the chance to see such an early work. The most recently completed pieces in the show are by **Pow Martinez**. The irreverent, playful, undeniably talented **Pow**, unfaithful as usual to traditional representation presents two portraits, a mash up of Guston and Condo, but clearly all **Pow**.

It is said that a period's art is reflective of that era's culture. In the nearly twenty years between these works, much has changed and it is electrifying to witness through the pieces in the show how art has grown, and expanded through the years. Collectors Plus is a show made possible by the passage of time. It is an invigorating demonstration of the prosperous artistic culture in the Philippines, and is a reminder that despite the country's modest size, a heterogeneous wealth of creative talent thrives within.

- **Isa Lorenzo**





Slit and Thrust 3, 2017
assemblage, house paint on canvas
78h x 111.42w in • 198.12h x 283w cm

INQUIRE

BOOK AN APPOINTMENT

BERNARDO PACQUING







INQUIRE

BOOK AN APPOINTMENT

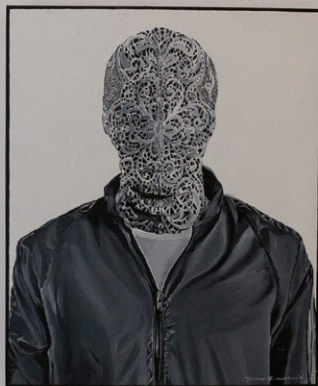
Privileg der Mission, 1984

oil on paper

7.09h x 6.46w in • 18h x 16.40w cm

ROSEMARIE TROCKEL







INQUIRE

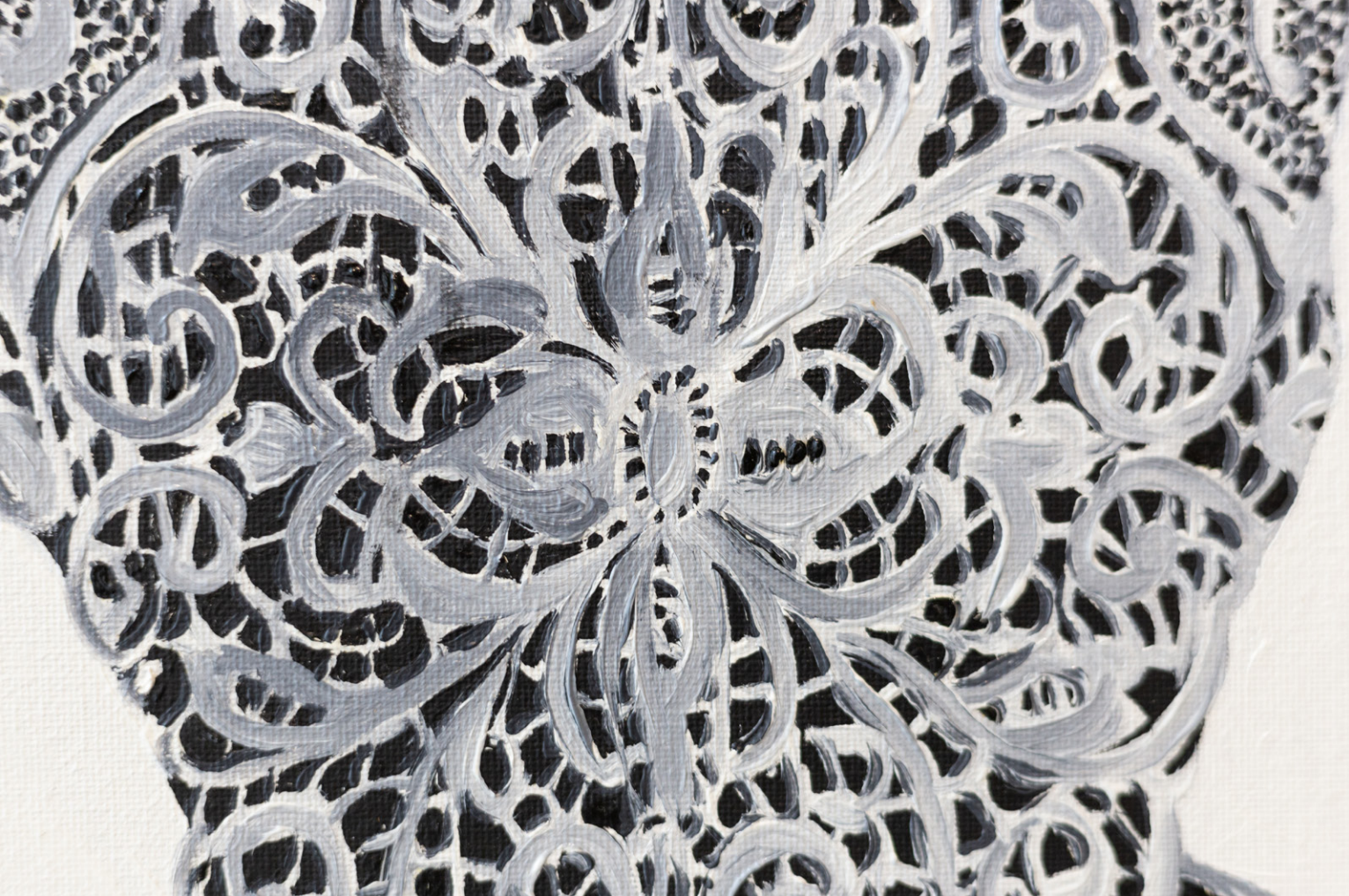
BOOK AN APPOINTMENT

LACE, 2016

oil on canvas

22.83h x 18.90w in • 58h x 48w cm

YVONNE QUISUMBING



INQUIRE

BOOK AN APPOINTMENT

Bracelet (From Gatsby 2), 2013

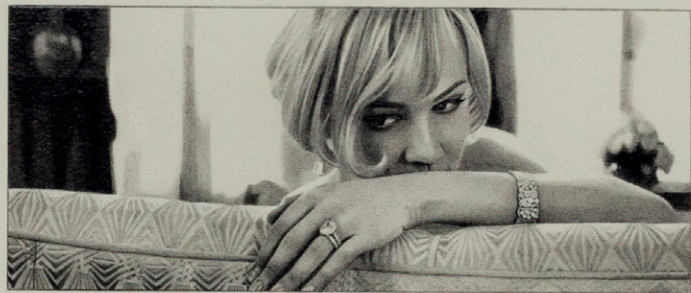
a series of ten framed pencil drawings on paper

paper: 3.94h x 5.83w in • 10h x 14.8w cm

image: 1.63h x 3.90w in • 4.15h x 9.9w cm



MARIE HARNETT





INQUIRE

BOOK AN APPOINTMENT

O Raio Sobre o Lapis, 20, 1990
bleistift auf papier
13.39h x 9.45w in • 34h x 24w cm

JULIÃO SARMENTO





Let Us Build a Mountain VIII, 2017

oil on aluminum

94.49h x 102.36w x 1.50d in • 240h x 260w x 3.81d cm

INQUIRE

BOOK AN APPOINTMENT

PATRICIA PEREZ EUSTAQUIO





INQUIRE

BOOK AN APPOINTMENT

Untitled, 2003
oil on canvas
48h x 48w in • 121.92h x 121.92w cm



YASMIN SISON



INQUIRE

BOOK AN APPOINTMENT

Ang Nakatira'y Kwago, 2010
oil on canvas
48h x 48w in • 121.92h x 121.92w cm



MELVIN CULABA







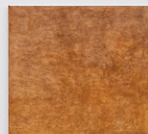
INQUIRE

BOOK AN APPOINTMENT

Parsifal, 2020
acrylic on canvas
84h x 60w in • 213.36h x 152.40w cm

CHATI CORONEL





INQUIRE

BOOK AN APPOINTMENT

Imitating The Shroud, 2020
oil on linen
43.31h x 48.03w in • 110h x 122w cm
SPI_LLim027



LOU LIM



INQUIRE

BOOK AN APPOINTMENT

Untitled (Mirror) A, 2011
acrylic on canvas
83.86h x 61.81w in • 213h x 157w cm

MARIA TANIGUCHI





INQUIRE

BOOK AN APPOINTMENT

Tabula Rasa, 2017

archival pigment ink print on Hahnemühle fine art paper, mounted on acrylic support, framed
72h x 48w in • 182.88h x 121.92w cm
Edition 1 of 5

WAWI NAVARROZA





INQUIRE

BOOK AN APPOINTMENT

Start 'Em Young, 2001
oil on canvas
60h x 46w in • 152.40h x 116.84w cm

GERALDINE JAVIER







[INQUIRE](#)

[BOOK AN APPOINTMENT](#)

Lord, 2005
oil on canvas
59.06h x 70.87w in • 150h x 180w cm

DENNIS GONZALES



INQUIRE

BOOK AN APPOINTMENT

Parallel History, Parallel Struggle,
Parallel Heart (King of All Kings), 2018
mixed media
72h x 72w in • 182.88h x 182.88w cm



LOUIE CORDERO x KAWAYAN DE GUIA





INQUIRE

BOOK AN APPOINTMENT

Inspector, 2017
acrylic on canvas
23h x 20w in • 58.42h x 50.80w cm



DINA GADIA

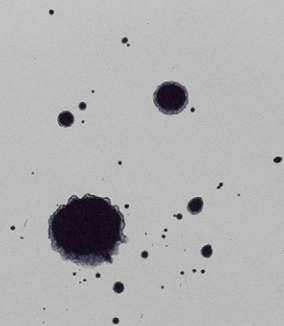


Untitled, 1990
prints with collage
29.92h x 21.26w in • 76h x 54w cm
Edition 11 of 15 and Edition 15 of 15

INQUIRE

BOOK AN APPOINTMENT

JAMES BROWN





INQUIRE

BOOK AN APPOINTMENT

da soul 1, 2020
oil and acrylic on canvas
24h x 24w in • 60.96h x 60.96w cm

POW MARTINEZ



INQUIRE

BOOK AN APPOINTMENT

da soul 2, 2020
oil and acrylic on canvas
24h x 24w in • 60.96h x 60.96w cm



POW MARTINEZ



INQUIRE

BOOK AN APPOINTMENT

Cicatrix, 2010
acrylic and paper on canvas
15.55h x 15.55w in • 39.50h x 39.50w cm



ROSEMARIE TROCKEL





INQUIRE

BOOK AN APPOINTMENT

Lucio and Miguel Collaboration Series III, 2008

acrylic on paper

60h x 55w in • 152.40h x 139.70w cm

LOUIE CORDERO x MARIANO CHING







Cloud 5, 2017

UV direct print on cardboard

27.56h x 66.93w in • 70h x 170w cm

INQUIRE

BOOK AN APPOINTMENT

MARIA JUSTUS



INQUIRE

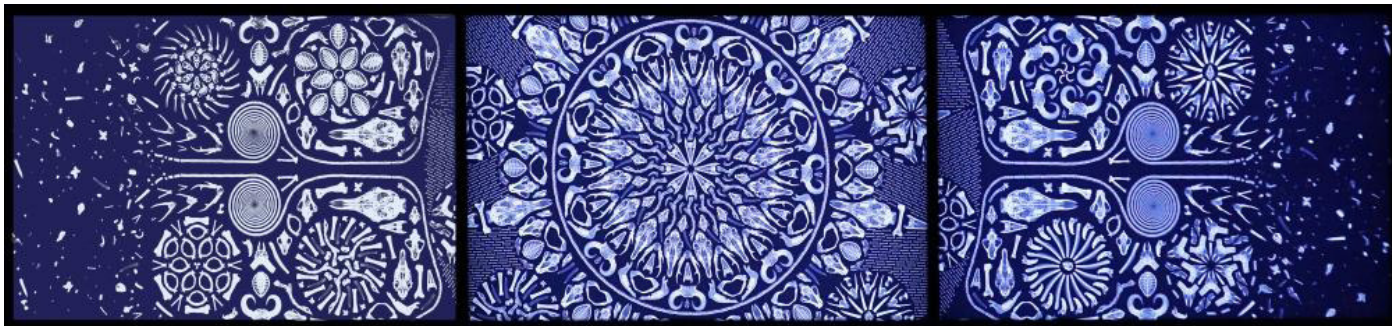
BOOK AN APPOINTMENT

We Are Accidents Waiting To Happen 5, 2014
oil on canvas, collage on convex mirror
96h x 76w in • 243.84h x 193.04w cm



ARTURO SANCHEZ JR





Hallow, 2015

light box

30h x 48w in • 76.20h x 121.92w cm
(three panels)

INQUIRE

BOOK AN APPOINTMENT

NONA GARCIA





INQUIRE

BOOK AN APPOINTMENT

Untitled (Pyrite), 2018
graphite and gold leaf on paper
32.68h x 32.48w in • 83h x 82.50w cm



PATRICIA PEREZ EUSTAQUIO





INQUIRE

BOOK AN APPOINTMENT

Shamanisms (drawing II), 2018
graphite and gold leaf on paper
59.06h x 39.37w in • 150h x 100w cm

PATRICIA PEREZ EUSTAQUIO





SILVERLENS

COLLECTORS PLUS

17 September to 10 October 2020

INQUIRE

BOOK AN APPOINTMENT

VISIT WEBSITE

**James Brown • Mariano Ching • Louie Cordero • Chati Coronel • Melvin Culaba
Kawayan De Guia • Patricia Perez Eustaquio • Dina Gadia • Nona Garcia • Dennis Gonzales
Marie Harnett • Geraldine Javier • Maria Justus • Lou Lim • Pow Martinez
Wawi Navarroza • Yvonne Quisumbing • Bernardo Pacquing • Arturo Sanchez Jr
Julião Sarmento • Yasmin Sison • Maria Taniguchi • Rosemarie Trockel**

JAMES BROWN, MARIANO CHING. LOUIE CORDERO, CHATI CORONEL,
MELVIN CULABA, PATRICIA PEREZ EUSTAQUIO, DINA GADIA,
NONA GARCIA, DENNIS GONZALES, KAWAYAN DE GUIA, MARIE HARNETT,
GERALDINE JAVIER, MARIA JUSTUS, LOU LIM, POW MARTINEZ,
WAWI NAVARROZA, BERNARDO PACQUING, YVONNE QUISUMBING,
ARTURO SANCHEZ JR., JULIÃO SARMENTO, YASMIN SISON,
MARIA TANIGUCHI, ROSEMARIE TROCKEL

Copyright © 2020 Silverlens Inc.

All rights reserved.

No part of this publication may be reproduced, stored in a retrieval system or transmitted in any form or by any means, electronic or otherwise, without the prior written consent of the above mentioned copyright holders, with the exception of brief excerpts and quotations used in articles, critical essays or research.

ISA LORENZO

Text © Silverlens Inc. 2020

All rights reserved.

No part of this essay may be reproduced, modified, or stored in a retrieval system or retransmission, in any form or by any means, for reasons other than personal use, without written permission from the author.

SILVERLENS

2263 Don Chino Roces Avenue Extension
Makati City, Philippines 1231

T +632.88160044

F +632.88160044

M +63917.5874011

www.silverlensgalleries.com

info@silverlensgalleries.com